

# 426 Eastway Drive

**.915 Acres: Land for SALE**

*Perfect for a Business Owner to Build or an Investor to do a Build to Suit!*



**Clay Durkin, Broker**

704-373-2114

[cdurkin@providencecommercial.com](mailto:cdurkin@providencecommercial.com)

**Chris Wannamaker, Broker**

704-373-1181

[cwannamaker@providencecommercial.com](mailto:cwannamaker@providencecommercial.com)



**Providence Commercial**  
REAL ESTATE ADVISORS

- .915 Acres available for sale. Zoned O-2

- Great opportunity for a business owner to build a building or a developer to do a build to suit.

- The site is close to NODA and directly on Eastway Drive midway between N. Tryon St. and The Plaza.

- Site is across from "Eastway Park".

- For juxtaposition, the site borders the new blue line extension rail line located midway between the Sugar Creek and Old Concord Rd. stops.

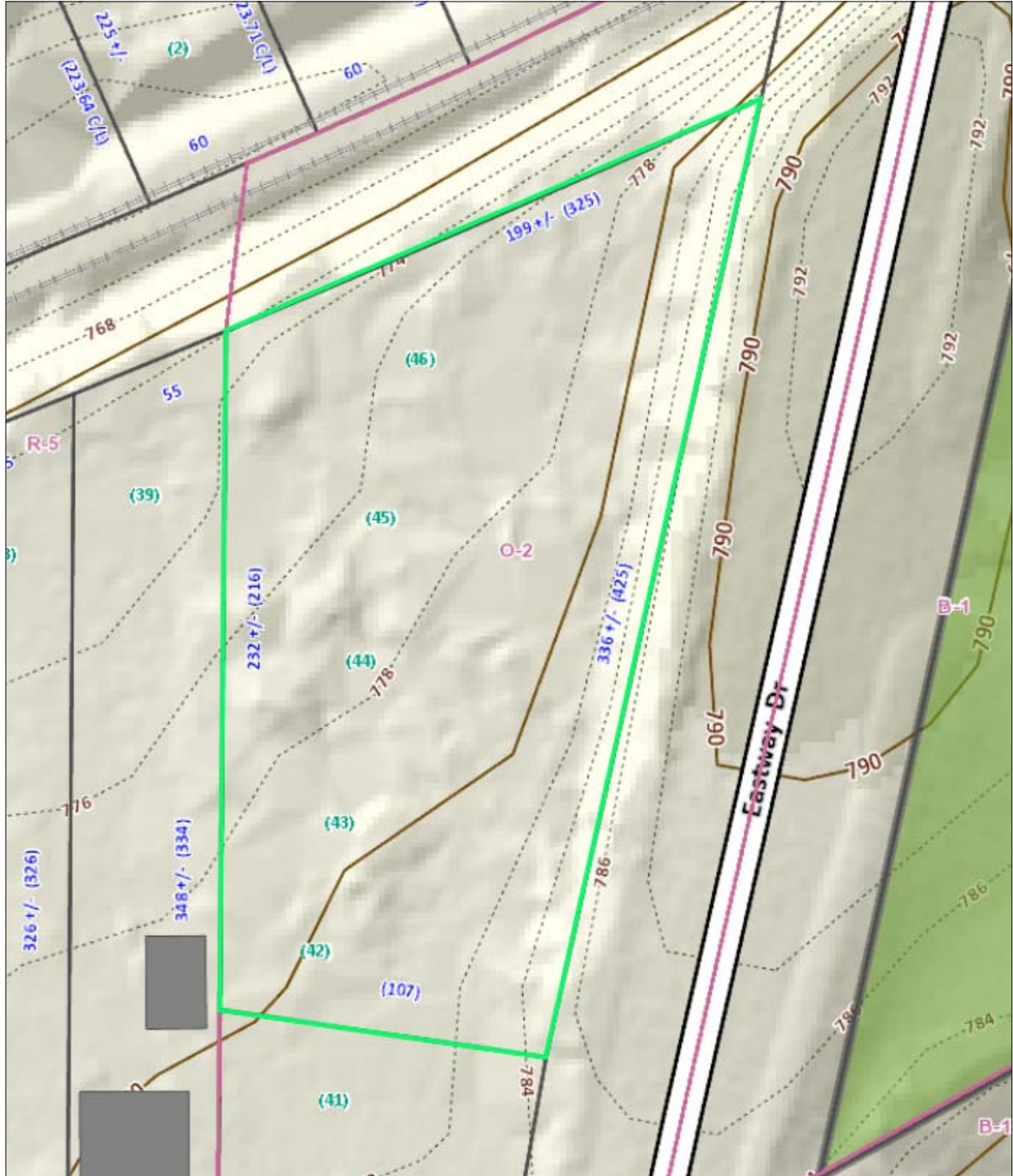
Providence Commercial Real Estate Advisors, LLC | 1307 West Morehead St., Suite 107 | Charlotte, North Carolina 28208

For more info., go to "Featured Properties" at [www.ProvidenceCommercial.com](http://www.ProvidenceCommercial.com)

# 426 Eastway Drive

**.915 Acres: Land for SALE**

*Perfect for a Business Owner to Build or an Investor to do a Build to Suit!*



Providence Commercial Real Estate Advisors, LLC | 1307 West Morehead St., Suite 107 | Charlotte, North Carolina 28208

For more info., go to "Featured Properties" at [www.ProvidenceCommercial.com](http://www.ProvidenceCommercial.com)