

# One Southpark Center - Suite 140

**3,173rsf: Office Space for SUBLEASE**  
***1st Floor Suite with Direct Access from the Lobby!***



-Easy 1st Floor Sublease in a tight Southpark Submarket. 6060 Piedmont Row Dr. South's Suite 140 is available at the end of May, 2018... Term ends Feb 28th, 2022. Layout consists of: Welcome area, Conference Room, 6 Private Offices, Kitchen, IT Room, a large "traffic" room that could work as a bullpen/cubicle area and a smaller file room w/ shelves.

-One SouthPark Center, a ten-story signature SouthPark skyline building, offers a unique design and upscale location to make this the perfect home for your company.

-The building received a complete renovation in 2008 with continued transformation through 2014. The lobby offers sophisticated upgrades including a plasma screen TV, state-of-the-art touchscreen electronic directory, and timeless marble accents.

-Exterior courtyard features inviting seating areas and Tenants can also enjoy the new fitness center, building conference room, newly renovated restrooms and upgraded elevator cabs.

**Clay Durkin, Broker**  
704-373-2114  
cdurkin@providencecommercial.com

**Chris Wannamaker, Broker**  
704-373-1181  
cwannamaker@providencecommercial.com



Providence Commercial Real Estate Advisors, LLC | 1307 West Morehead St., Suite 107 | Charlotte, North Carolina 28208

For more information, go to "Properties" at [www.ProvidenceCommercial.com](http://www.ProvidenceCommercial.com)

# One Southpark Center - Suite 140

**3,173rsf: Office Space for SUBLEASE**  
*1st Floor Suite with Direct Access from the Lobby!*

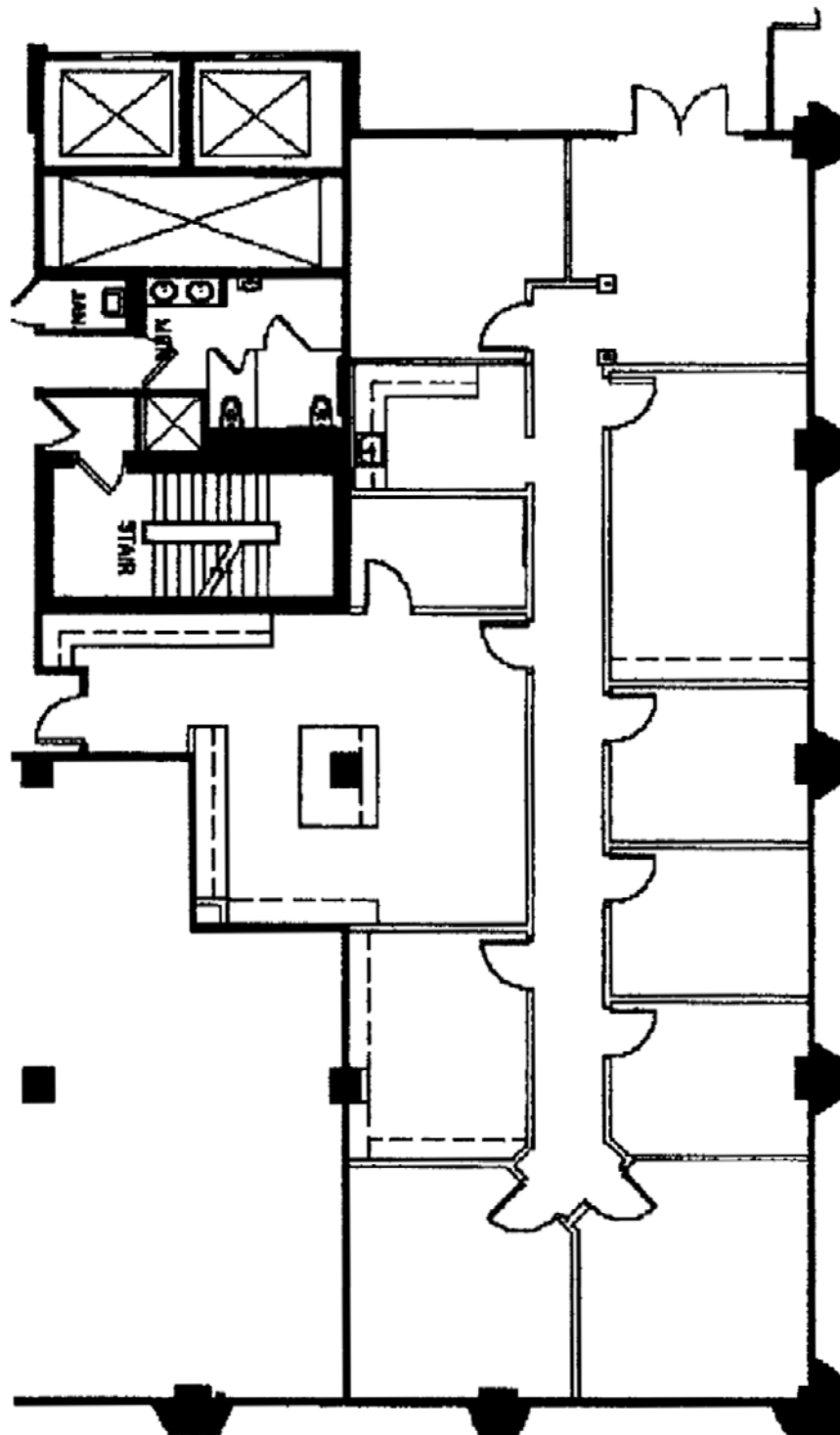


Providence Commercial Real Estate Advisors, LLC | 1307 West Morehead St., Suite 107 | Charlotte, North Carolina 28208

For more information, go to "Properties" at [www.ProvidenceCommercial.com](http://www.ProvidenceCommercial.com)

# One Southpark Center - Suite 140

**3,173rsf: Office Space for SUBLEASE**  
*1st Floor Suite with Direct Access from the Lobby!*



Providence Commercial Real Estate Advisors, LLC | 1307 West Morehead St., Suite 107 | Charlotte, North Carolina 28208

For more information, go to "Properties" at [www.ProvidenceCommercial.com](http://www.ProvidenceCommercial.com)