

Shops at Lakeview: 8535 Hankins Rd.

Retail Space for Lease in the Northeast Charlotte Submarket
10,063sf Center with Affordable Rates + Great Visibility from W.T. Harris Bv.



Every effort has been made to provide accurate and reliable information, but no liability is assumed for errors and omissions. It is your responsibility to conduct a careful investigation of the property to verify this information and determine to your satisfaction the suitability of the property to your needs.

- Great Opportunity to Standout in a Nice Neighborhood Retail Center in Charlotte's Northeastern Submarket.
- Actual Address of the Center is 8535 Hankins Road... 2 points of Easy Access from Northbound W.T. Harris Blvd. as well as the Traffic Light at Lakeview Road.
- Great Visibility... Monument AND Building Signage.
- Retail Tenants in the Center include a Sub Shop, Salon, Barber, Bakery and a Music School.
- Numerous Area Office Parks Close by + Industrial Business Activity in the Surrounding Area.
- Nicely Traveled corridor with over 34k/CPD.
- Plentiful Drive-up Parking on the Property, Very Convenient to the Suite Entrances.
- Very Competitive PSF Lease Rates.

Clay Durkin, Broker

704-373-2114

cdurkin@providencecommercial.com

Chris Wannamaker, Broker

704-373-1181

cwannamaker@providencecommercial.com



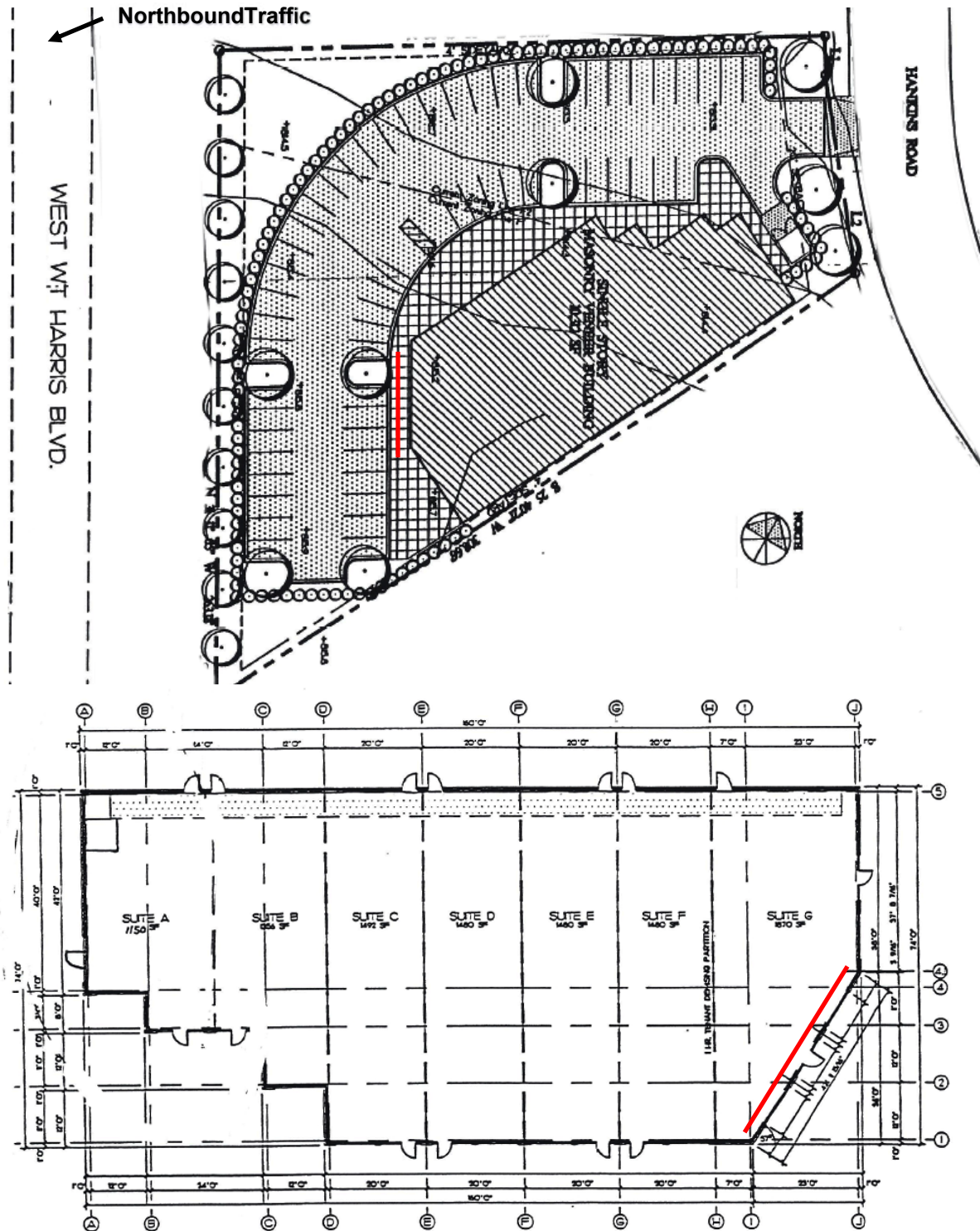
Providence Commercial
REAL ESTATE ADVISORS

Providence Commercial Real Estate Advisors, LLC | 1307 West Morehead St., Suite 107 | Charlotte, North Carolina 28208

For more information, go to "Properties" at www.ProvidenceCommercial.com

Shops at Lakeview: 8535 Hankins Rd.

Retail Space for Lease in the Northeast Charlotte Submarket
10,063sf Center with Affordable Rates + Great Visibility from W.T. Harris Bv.



Providence Commercial Real Estate Advisors, LLC | 1307 West Morehead St., Suite 107 | Charlotte, North Carolina 28208

For more information, go to "Properties" at www.ProvidenceCommercial.com